

Partner: Symetrix
Model: Edge/Radius
Device Type: Digital Signal Processor



GENERAL INFORMATION

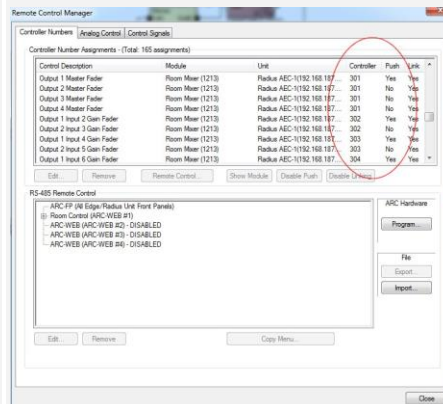
SIMPLWINDOWS NAME:	Symetrix Input Output Select v3.0
CATEGORY:	Mixer
VERSION:	3.0
SUMMARY:	This module controls an input or output selector control point in the Symetrix Edge and Radius.

This module controls an input or output selector control point in the Symetrix Edge and Radius.

This Symetrix Input Output Select v3.0 module is used to control an input or output selector control object within the Symetrix Edge or Radius. This module's parameters need to be setup correctly in order to control the source selector object that you wish to control.

Important: Feedback status will only be accurate if the source selector control is set to push changes in status.

GENERAL NOTES:



CRESTRON HARDWARE REQUIRED:	N/A
------------------------------------	-----

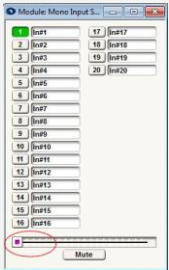
SETUP OF CRESTRON HARDWARE:	This module requires the Symetrix Command Processor IP v3.0 or the Symetrix Command Processor Serial v3.0 modules in order to operate. Please read the help files associated with these modules for Crestron Hardware Setup.
------------------------------------	--

VENDOR FIRMWARE:	2.868
-------------------------	-------

Partner: Symetrix
Model: Edge/Radius
Device Type: Digital Signal Processor



PARAMETERS:

<p>Controller_Number</p>	<p>The controller number of the object that you wish to control. This should be entered as 5 digits with leading zeroes as necessary. For example, if the controller number is 150, it should be entered as 00150.</p> <p>The controller number should be assigned to the slider at the bottom of the input or output selector object. It is not necessary to assign control numbers to the individual input or output button on the control.</p> 
<p>Number_Of_Divisions</p>	<p>This is the number of divisions available for the source selector control object. This must be setup properly in order for the control to function correctly. The valid range is from 2d to 80d.</p>

CONTROL:

<p>Source_Select</p>	<p>A</p> <p>Use this input to set the input or output source to a specific value. The value must be less than or equal to the number of divisions in order to transmit a command. A value of zero is not valid and will not transmit a command. The value should be a decimal value that is triggered from a symbol such as an analog initialize. For example, to select input 5 use an analog initialize with a value of 5d.</p>
<p>From_Command_Processor</p>	<p>S</p> <p>Serial data signal to be routed from one of the To_Module_* outputs on the Symetrix Command Processor IP v3.0 or the Symetrix Command Processor Serial v3.0 modules.</p>

FEEDBACK:

<p>Selection_Out_Of_Range</p>	<p>D</p> <p>This signal will be high if the last analog value sent to the Source_Select input is outside of the allowable range. This would be when the last value sent was 0d or when the last value sent was greater than the number of divisions defined.</p>
<p>Source_Selected</p>	<p>A</p> <p>Real feedback indicating the current input or output that is selected.</p>
<p>To_Command_Processor</p>	<p>S</p> <p>Serial data signal to be sent to the From_Modules input on the Symetrix Command Processor IP v3.0 or the Symetrix Command Processor Serial v3.0 modules.</p>

Partner: Symetrix
Model: Edge/Radius
Device Type: Digital Signal Processor

**TESTING:**

OPS USED FOR TESTING:	PRO2: 4.008.0008 CP3: 1.009.0029
SIMPL WINDOWS USED FOR TESTING:	4.02.53
CRES DB USED FOR TESTING:	47.05.002.01
DEVICE DATABASE:	60.02.001.00
SYMBOL LIBRARY USED FOR TESTING:	906
SAMPLE PROGRAM:	Symetrix ATI IP Demo v3.0 CP3 Symetrix ATI Serial Demo v3.0 CP3 Symetrix ATI IP Demo v3.0 Pro2 Symetrix ATI Serial Demo v3.0 Pro2 Symetrix VOIP IP Demo v3.0 CP3 Symetrix VOIP Serial Demo v3.0 CP3 Symetrix VOIP IP Demo v3.0 Pro2 Symetrix VOIP Serial Demo v3.0 Pro2
REVISION HISTORY:	v3.0 – Initial Release – named as v3.0 to avoid confusion with earlier module versions provided by Symetrix.