

**Partner: Symetrix**  
**Model: Edge/Radius**  
**Device Type: Digital Signal Processor**



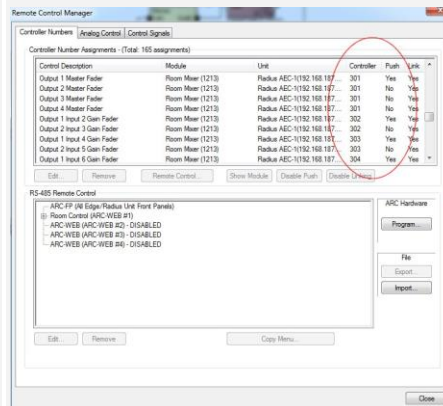
**GENERAL INFORMATION**

<b>SIMPLWINDOWS NAME:</b>	Symetrix Controller Receiver v3.0
<b>CATEGORY:</b>	Mixer
<b>VERSION:</b>	3.0
<b>SUMMARY:</b>	This module provides status from control points in the Symetrix Edge and Radius.

This module provides status from control points in the Symetrix Edge and Radius. This Symetrix Controller Receiver v3.0 module is used to track status of control object within the Symetrix Edge or Radius. An example of this might be to track status for phantom power on an input or a signal presence LED. This module's parameter needs to be setup correctly in order to provide status for the object(s) that you wish to monitor. It is not recommended to use this module to track status of meters in the Symetrix system as this can cause heavy traffic from the Symetrix unit to the Crestron system.

**Important: Feedback status will only be accurate if the control objects are set to push changes in status.**

**GENERAL NOTES:**



<b>CRESTRON HARDWARE REQUIRED:</b>	N/A
<b>SETUP OF CRESTRON HARDWARE:</b>	This module requires the Symetrix Command Processor IP v3.0 or the Symetrix Command Processor Serial v3.0 modules in order to operate. Please read the help files associated with these modules for Crestron Hardware Setup.
<b>VENDOR FIRMWARE:</b>	2.868

**Partner: Symetrix**  
**Model: Edge/Radius**  
**Device Type: Digital Signal Processor**

**PARAMETERS:**

<b>Controller1_Number</b>	The controller number of the first object that you wish to monitor. This should be entered as 5 digits with leading zeroes as necessary. For example, if the controller number is 150, it should be entered as 00150.  The remaining controller values will monitor the next 9 values sequentially. Therefore, if Controller1_Number is set to 150, the output for Controller10_Value will correspond to the controller at number 159.
---------------------------	--

**CONTROL:**

<b>From_Command_Processor</b>	S	Serial data signal to be routed from one of the To_Module_* outputs on the Symetrix Command Processor IP v3.0 or the Symetrix Command Processor Serial v3.0 modules.
-------------------------------	---	--

**FEEDBACK:**

<b>To_Command_Processor</b>	S	Serial data signal to be sent to the From_Modules input on the Symetrix Command Processor IP v3.0 or the Symetrix Command Processor Serial v3.0 modules.
<b>ControllerX_Value</b>	A	Real feedback indicating the current setting of controller X where X=1 to 10. Controller1_Value will monitor the value of the controller number specified in the Controller1_Number parameter. Controller10_Value will monitor the value of the controller number specified in the Controller1_Number parameter + 9.

**Partner: Symetrix**  
**Model: Edge/Radius**  
**Device Type: Digital Signal Processor**

**TESTING:**

<b>OPS USED FOR TESTING:</b>	PRO2: 4.008.0008 CP3: 1.009.0029
<b>SIMPL WINDOWS USED FOR TESTING:</b>	4.02.53
<b>CRES DB USED FOR TESTING:</b>	47.05.002.01
<b>DEVICE DATABASE:</b>	60.02.001.00
<b>SYMBOL LIBRARY USED FOR TESTING:</b>	906
<b>SAMPLE PROGRAM:</b>	Symetrix ATI IP Demo v3.0 CP3 Symetrix ATI Serial Demo v3.0 CP3 Symetrix ATI IP Demo v3.0 Pro2 Symetrix ATI Serial Demo v3.0 Pro2 Symetrix VOIP IP Demo v3.0 CP3 Symetrix VOIP Serial Demo v3.0 CP3 Symetrix VOIP IP Demo v3.0 Pro2 Symetrix VOIP Serial Demo v3.0 Pro2
<b>REVISION HISTORY:</b>	v3.0 – Initial Release – named as v3.0 to avoid confusion with earlier module versions provided by Symetrix.