

Partner: Symetrix
Model: Edge/Radius
Device Type: Digital Signal Processor



GENERAL INFORMATION

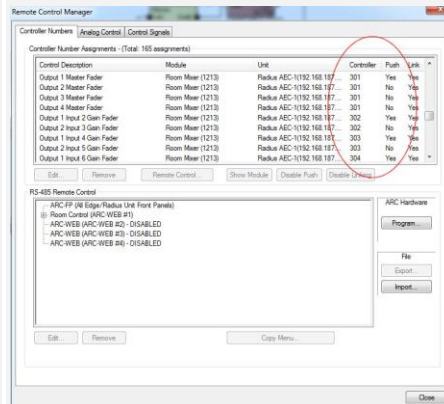
SIMPLWINDOWS NAME:	Symetrix Button Push v3.0
CATEGORY:	Mixer
VERSION:	3.0
SUMMARY:	This module controls button objects in the Symetrix Edge and Radius.

This module controls button objects in the Symetrix Edge and Radius.

This Symetrix Button Push v3.0 module is used to control a wide variety of control objects within the Symetrix Edge or Radius. This module's parameter needs to be setup correctly in order to control the button object that you wish to control. In order for feedback to function properly, the button control number must be setup to push changes in state.

Important: In order for feedback status to be accurate and the toggle function to work properly, the control object must be set to push changes in status.

GENERAL NOTES:



CRESTRON HARDWARE REQUIRED:	N/A
SETUP OF CRESTRON HARDWARE:	This module requires the Symetrix Command Processor IP v3.0 or the Symetrix Command Processor Serial v3.0 modules in order to operate. Please read the help files associated with these modules for Crestron Hardware Setup.
VENDOR FIRMWARE:	2.868

Partner: Symetrix
Model: Edge/Radius
Device Type: Digital Signal Processor

**PARAMETER:**

Controller_Number	The controller number of the object that you wish to control. This should be entered as 5 digits with leading zeroes as necessary. For example, if the controller number is 150, it should be entered as 00150.
--------------------------	---

CONTROL:

Button_On, Button_Off, Button_Toggle	D	Pulse to change state of the button object. Note: Toggle control will only function properly if the button control is set to push changes in status.
From_Command_Processor	S	Serial data signal to be routed from one of the To_Module_* outputs on the Symetrix Command Processor IP v3.0 or the Symetrix Command Processor Serial v3.0 modules.

FEEDBACK:

Button_Is_On, Button_Is_Off	D	Indicates the current state status. Note: Feedback status will only be accurate if the button control is set to push changes in status.
To_Command_Processor	S	Serial data signal to be sent to the From_Modules input on the Symetrix Command Processor IP v3.0 or the Symetrix Command Processor Serial v3.0 modules.

Partner: Symetrix
Model: Edge/Radius
Device Type: Digital Signal Processor

**TESTING:**

OPS USED FOR TESTING:	PRO2: 4.008.0008 CP3: 1.009.0029
SIMPL WINDOWS USED FOR TESTING:	4.02.53
CRES DB USED FOR TESTING:	47.05.002.01
DEVICE DATABASE:	60.02.001.00
SYMBOL LIBRARY USED FOR TESTING:	906
SAMPLE PROGRAM:	Symetrix ATI IP Demo v3.0 CP3 Symetrix ATI Serial Demo v3.0 CP3 Symetrix ATI IP Demo v3.0 Pro2 Symetrix ATI Serial Demo v3.0 Pro2 Symetrix VOIP IP Demo v3.0 CP3 Symetrix VOIP Serial Demo v3.0 CP3 Symetrix VOIP IP Demo v3.0 Pro2 Symetrix VOIP Serial Demo v3.0 Pro2
REVISION HISTORY:	v3.0 – Initial Release – named as v3.0 to avoid confusion with earlier module versions provided by Symetrix.