

Partner: DBX
Model: ZonePro 126x
Device Type: DSP



GENERAL INFORMATION

SIMPLWINDOWS NAME:	DBX ZonePro126x Mixer
CATEGORY:	Digital Sound Processor
VERSION:	1.0B
SUMMARY:	This processor controls a DBX ZonePro 1260,1261,1260m, or 1261m over RS-232.
GENERAL NOTES:	RS-232 Control only. Use this module with the "DBX ZonePro126x Processor" and "DBX ZonePro 126x Router". This module is intended for the control of a single DBX ZonePro 1260,1261,1260m, or 1261m over RS-232.
CRESTRON HARDWARE REQUIRED:	2-Series Processor w/RS-232 Port, 3-Series Processor w/RS-232 Port
SETUP OF CRESTRON HARDWARE:	N/A
VENDOR FIRMWARE:	v1.110
VENDOR SETUP:	DBX ZonePRO1261

CONTROL:

Mixer_RX\$	S	Connect to the "Module_TX_X" on the DBX ZonePro 126X Processor Module.
Master_Mute_Toggle	D	Mute on/off the Master Volume – Pulse to Toggle Mute State.
Master_Mute_On	D	Mute Master Volume.
Master_Mute_Off	D	Unmute Master Volume.
Master_Volume	A	Set Master Volume Level. 0d (0%) = -inf (unaudible) 65535d (100%) = 20.dB
Volume_Input_[x]	A	Set Volume Input Level. 0d (0%) = -inf (unaudible) 65535d (100%) = 20.dB

Partner: DBX
Model: ZonePro 126x
Device Type: DSP



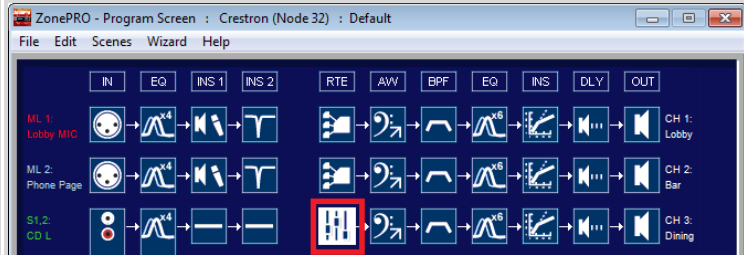
FEEDBACK:

Mixer_TX\$	S	Connect to "From_Modules" on the DBX ZonePro 126X Processor Module.
Master_Mute_FB	D	Master Mute Feedback
Master_Volume_FB	A	Indicates the current volume level of the master volume.
Volume_Input [x]_FB	A	Indicates the current volume level of specified input.

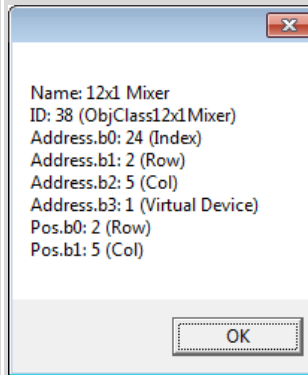
PARAMETERS:

Object_ID

S Instance ID tag of mixer. These ID's change as you group inputs to stereo or run the configuration wizard. Below shows module 3 selected:



Once Selected, hit the keys "CTRL + SHIFT + O" to see id tag.



Enter b0-b1-b3-b3 into the parameter field with dashes in between.

Node ID	32
OBID	24-2-5-1

Partner: DBX
Model: ZonePro 126x
Device Type: DSP

**TESTING:**

OPS USED FOR TESTING:	2-Series: v4.008.0000 3-Series: v1.008.0040
SIMPL WINDOWS USED FOR TESTING:	V4.02.21.00
DEVICE DB USED FOR TESTING:	V53.05.004.00
CRES DB USED FOR TESTING:	V43.00.001.00
SYMBOL LIBRARY USED FOR TESTING:	v810
SAMPLE PROGRAM:	DBX ZonePro 126x v1 Demo MC3.smw
REVISION HISTORY:	v1.0 – Original release.