

Manufacturer: Yamaha

This module controls the scenes of the Yamaha DME

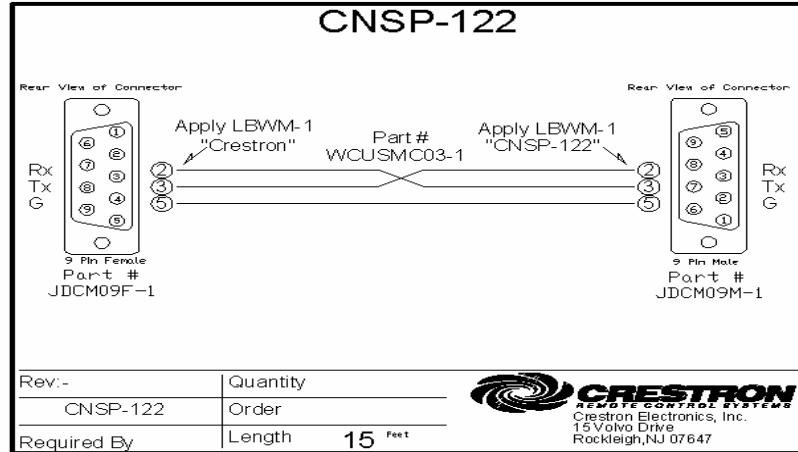


GENERAL INFORMATION

SIMPLWINDOWS NAME:	Yamaha DME Scene
CATEGORY:	Device interface
VERSION:	1.0
SUMMARY:	This module controls the Scenes of the Yamaha DME
GENERAL NOTES:	<p>The Yamaha DME demo program consists of 5 modules:</p> <ul style="list-style-type: none">- Meter: This module controls the meter values of a Yamaha DME meter RCSL parameter- Scene: This module controls the scenes of a Yamaha DME- On Off: This module controls the on off of a CSL parameter of the DME- Value (db): This module controls the value of a CSL parameter of the DME (in db method)- Value (curve table): This module controls the value of a CSL parameter of the DME (curve table method)
CRESTRON HARDWARE REQUIRED:	<p>Yamaha DME devices can be controlled over either TCP-IP or RS-232. The demo program implements both ways.</p> <p>You'll need an X or 2 series processor with, depending on the way of control, a com port and/or Ethernet port.</p>
SETUP OF CRESTRON HARDWARE:	The demo program was tested on a MC2E with TPS-15
VENDOR FIRMWARE:	V3.06
VENDOR SETUP:	<p>The demo program was tested over RS-232 on a DME-64N with Yamaha DME configuration file: Crestron RS232.daf</p> <p>The demo program was tested over TCP-IP on a DME4io-ES with Yamaha DME configuration file: Crestron TCP-IP.daf</p>



CABLE DIAGRAM:



CONTROL:

Scene_next	D	Pulse that makes the DME switch to the next scene
Scene_previous	D	Pulse that makes the DME switch to the previous scene
Scene_nr	A	Analog input to set the current scene number
[Get_current_scene]	D	Optional pulse to get the currently selected scene
Rx	S	To be connected to the Rx of the com port (or tcp/ip client)

FEEDBACK:

Scene_nr_fb	A	Return the currently selected scene number
Scene_name_fb	S	Return the currently selected scene name
Tx	S	To be connected to the Tx of the com port (or tcp/ip client)

TESTING:



OPS USED FOR TESTING:	v3.155.1143
COMPILER USED FOR TESTING:	Simpl windows 2.08.38
SAMPLE PROGRAM:	Yamaha DME Demo Program.smw
REVISION HISTORY:	V. 1.0