

Manufacturer: Yamaha

This module controls the On Off of a parameter of the Yamaha DME

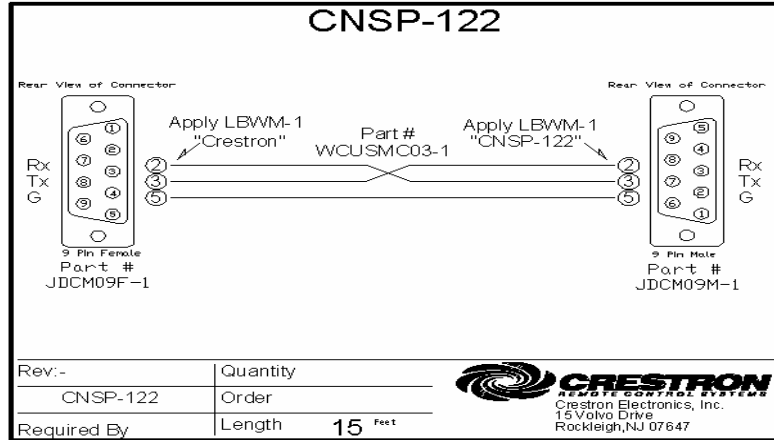


GENERAL INFORMATION

SIMPLWINDOWS NAME:	Yamaha DME On Off
CATEGORY:	Device interface
VERSION:	1.0
SUMMARY:	This module controls the On Off of a parameter of the Yamaha DME
GENERAL NOTES:	<p>The Yamaha DME demo program consists of 5 modules:</p> <ul style="list-style-type: none">- Meter: This module controls the meter values of a Yamaha DME meter RCSL parameter- Scene: This module controls the scenes of a Yamaha DME- On Off: This module controls the on off of a CSL parameter of the DME- Value (db): This module controls the value of a CSL parameter of the DME (in db method)- Value (curve table): This module controls the value of a CSL parameter of the DME (curve table method)
CRESTRON HARDWARE REQUIRED:	<p>Yamaha DME devices can be controlled over either TCP-IP or RS-232. The demo program implements both ways.</p> <p>You'll need an X or 2 series processor with, depending on the way of control, a com port and/or Ethernet port.</p>
SETUP OF CRESTRON HARDWARE:	The demo program was tested on a MC2E with TPS-15
VENDOR FIRMWARE:	V3.06
VENDOR SETUP:	<p>The demo program was tested over RS-232 on a DME-64N with Yamaha DME configuration file: Crestron RS232.daf</p> <p>The demo program was tested over TCP-IP on a DME4io-ES with Yamaha DME configuration file: Crestron TCP-IP.daf</p>



CABLE DIAGRAM:



CONTROL:

On	D	Pulse to put the value parameter to "on"
Off	D	Pulse to put the value parameter to "off"
[Parameter]	A	Optional analog input to specify which RCSL value parameter should be controlled (use this if multiple RCSL value parameters should be controlled with 1 module)
Rx	S	To be connected to the Rx of the com port (or tcp/ip client)

FEEDBACK:

On_fb	D	Pulse that goes high and will stay high for as long as the specified RCSL value parameter is in "on" state
Off_fb	D	Pulse that goes high and will stay high for as long as the specified RCSL value parameter is in "off" state
Tx	S	To be connected to the Tx of the com port (or tcp/ip client)

PARAMETERS:



Parameter	A	Optional analog input to specify which RCSL value parameter should be controlled
TESTING:		
OPS USED FOR TESTING:	v3.155.1143	
COMPILER USED FOR TESTING:	Simpl windows 2.08.38	
SAMPLE PROGRAM:	Yamaha DME Demo Program.smw	
REVISION HISTORY:	V. 1.0	