



Manufacturer: Sony Imaging Products & Solutions Inc.
Model: MAS-A100
Device Type: Microphone

CONTACT SUPPORT:

Table with 2 columns: Field Name and Value. Fields include COMPANY NAME, SUPPORT CONTACT, EMAIL ADDRESS, and NOTES.

GENERAL INFORMATION

Table with 2 columns: Field Name and Value. Fields include SIMPLWINDOWS NAME, CATEGORY, VERSION, SUMMARY, and GENERAL NOTES.



Manufacturer: Sony Imaging Products & Solutions Inc.  
Model: MAS-A100  
Device Type: Microphone

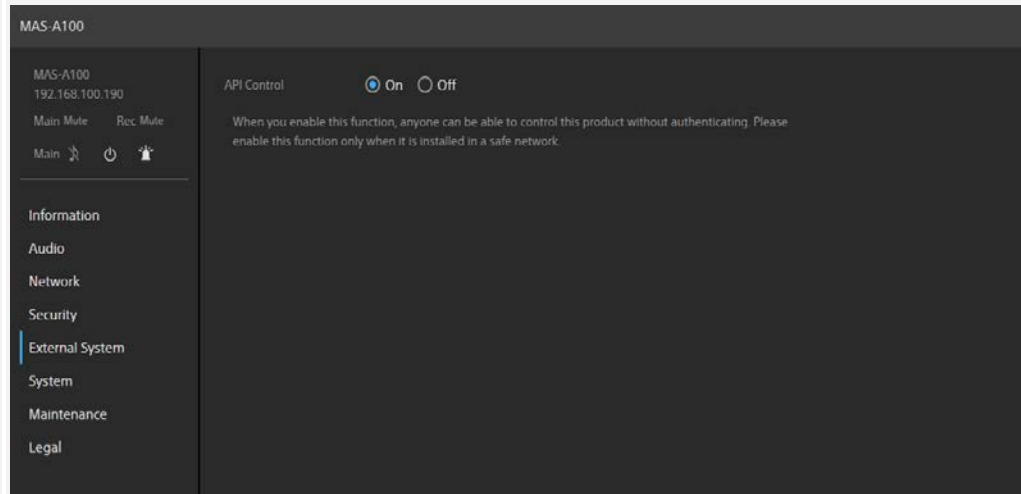


Figure 1: API control setting in the Web UI of the microphone.

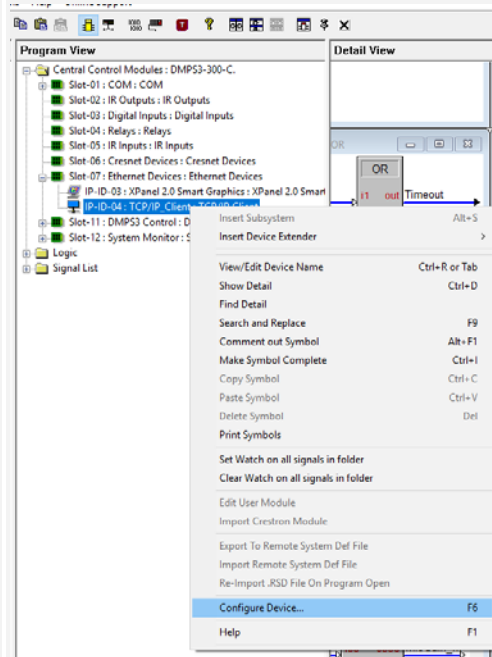


Figure 2: Modification of the configure device setting.

Manufacturer: Sony Imaging Products & Solutions Inc.  
 Model: MAS-A100  
 Device Type: Microphone

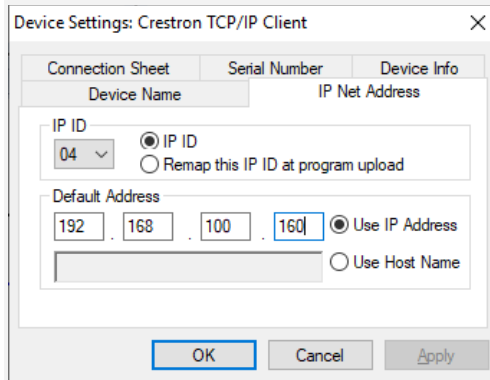


Figure 3: Modification of the IP address setting.

\*The above screen captures are based on SIMPL Windows version described in SIMPL WINDOWS USED FOR TESTING column under TESTING chapter. The same also applies to the SIMPL Windows screen capture below.

<b>sCRESTRON HARDWARE REQUIRED:</b>	3-series processor with Ethernet capabilities
<b>SETUP OF CRESTRON HARDWARE:</b>	N/A
<b>VENDOR FIRMWARE:</b>	Greater than or equal to v1.00 (Be sure not to mix up the software version among microphones being connected.)
<b>VENDOR SETUP:</b>	IPv4 address of the microphone should be configured appropriately beforehand by using Sony Microphone Array System Manager MASM-1.
<b>CABLE DIAGRAM:</b>	TCP-IP

<b>CONTROL:</b>		
<b>MicActive_On</b>	D	Pulse to turn Active on.
<b>MicActive_Off</b>	D	Pulse to turn Active off.
<b>MicMute_On</b>	D	Pulse to turn Mute on.
<b>MicMute_Off</b>	D	Pulse to turn Mute off.
<b>MicGain_Up</b>	D	Press to increment gain value.



Manufacturer: Sony Imaging Products & Solutions Inc.  
 Model: MAS-A100  
 Device Type: Microphone

MicGain_Down	D	Press to decrement gain value.
GetStatus	D	Pulse to refresh active status, mute status, and gain value

**FEEDBACK:**

Waiting_for_response	D	High while waiting for a response.
Negative_response	D	High for 6 seconds after receiving a negative response.
Timeout	D	High for 6 seconds after timeout waiting for a response.
Set_gain_value	A	Gain value set by MicGain_Up or MicGain_Down control.
Active_status	A	Active status.
Mute_status	A	Mute status.
Gain_value	S	Gain value.
Negative_response_message	S	The last received string with a negative response.
Sent_string	S	The last sent string with a control (for debug use).

**PARAMETERS:**

N/A		
-----	--	--

**TESTING:**

OPS USED FOR TESTING:	1.502.3175.21489
SIMPL WINDOWS USED FOR TESTING:	4.11.06
DEVICE DB USED FOR TESTING:	110.05.001.00
CRES DB USED FOR TESTING:	84.05.001.00



Manufacturer: Sony Imaging Products & Solutions Inc.  
Model: MAS-A100  
Device Type: Microphone

<b>SYMBOL LIBRARY USED FOR TESTING:</b>	1098
<b>SAMPLE PROGRAM:</b>	Sony_MAS-A100
<b>REVISION HISTORY:</b>	V1.0 – First release