



Somfy Digital Network

Cabling



- This document is the global guide line for SDN motors.
- In addition we recommend to read with attention the specific guide line and installation guide for SDN controller as:
 - KNX RS485 Motors controller WM
 - animeo IP RS485

What is on the bus?

Communication

- Control
 - User Directed
 - Automated
- Status
 - Positioning Status
 - Motor Operating Status
 - Motor Fault Status

SDN +

SDN -

SDN GND

Power (24VDC)

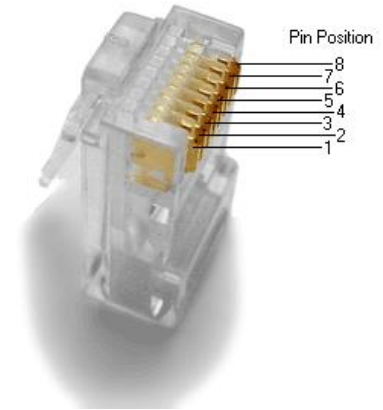
- Keypads
- Interfaces
- Sensors
- Accessories
- Gateways
- Not for motors !

SDN Power +24V

SDN Power GND

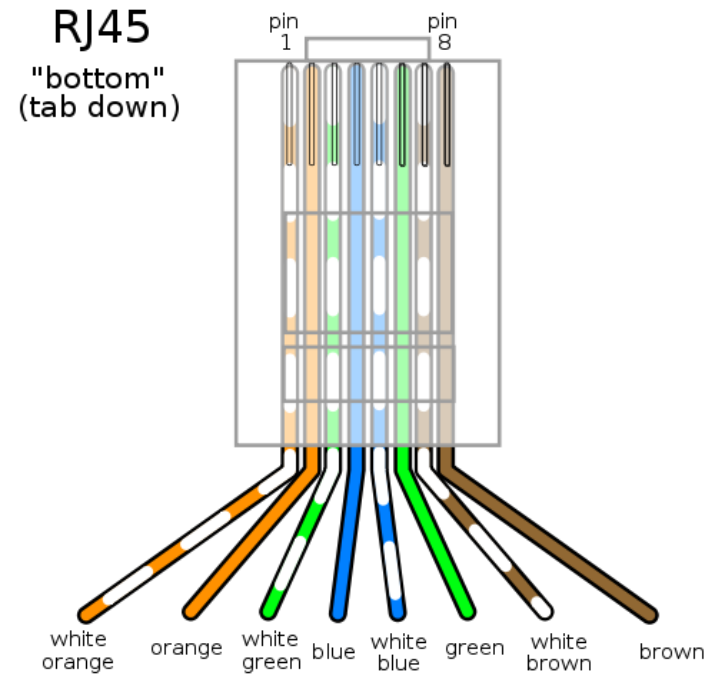
■ The standard Somfy Digital Network connector is RJ45.

- If for any reason the RJ45 connection is not possible directly in the SDN device, an adaptor should be proposed.

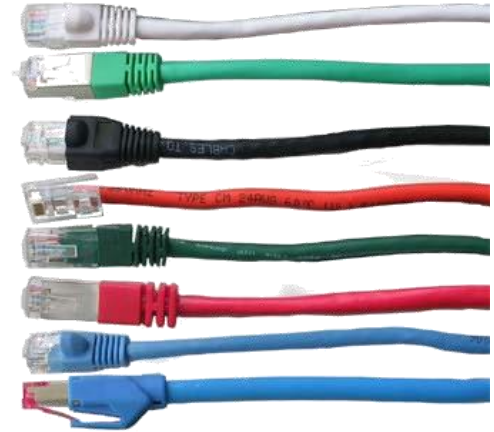


■ The RJ45 connector is wired to cable using the TIA T586B standard:

- Pin 1 - SDN +
- Pin 2 - SDN -
- Pin 3 - NA
- Pin 4 - SDN Power +24V
- Pin 5 - SDN Power +24V
- Pin 6 – NA
- Pin 7 - SDN Power GND
- Pin 8 - SDN Power GND & SDN GND

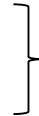


- The Somfy Digital Network uses twisted pair category wire.
- A Characteristic impedance of 100Ω (-10Ω $+30\Omega$) is required.
- Four (4) pairs are required for full connection and maximum compatibility between devices.



■ Shields :

Old name	New name	cable screening	pair shielding
UTP	U/UTP	none	none
STP	U/FTP	none	foil
FTP	F/UTP	foil	none
S-STP	S/FTP	braiding	foil
S-FTP	SF/UTP	foil, braiding	none
SFTP		Foil	Shield

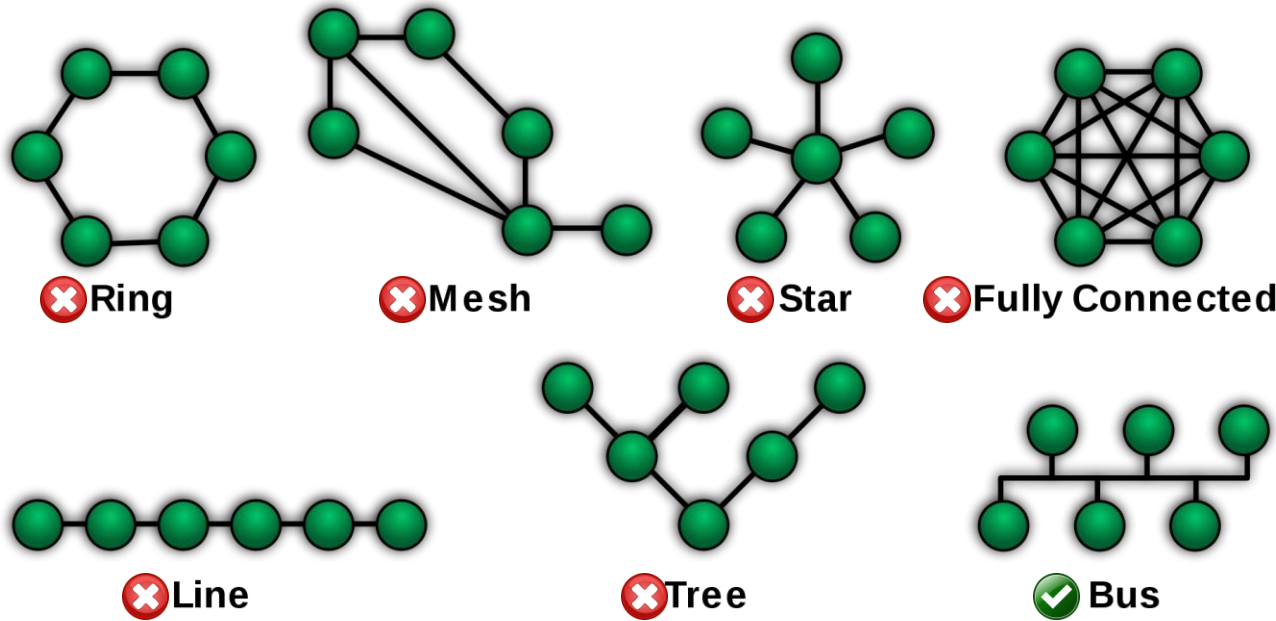


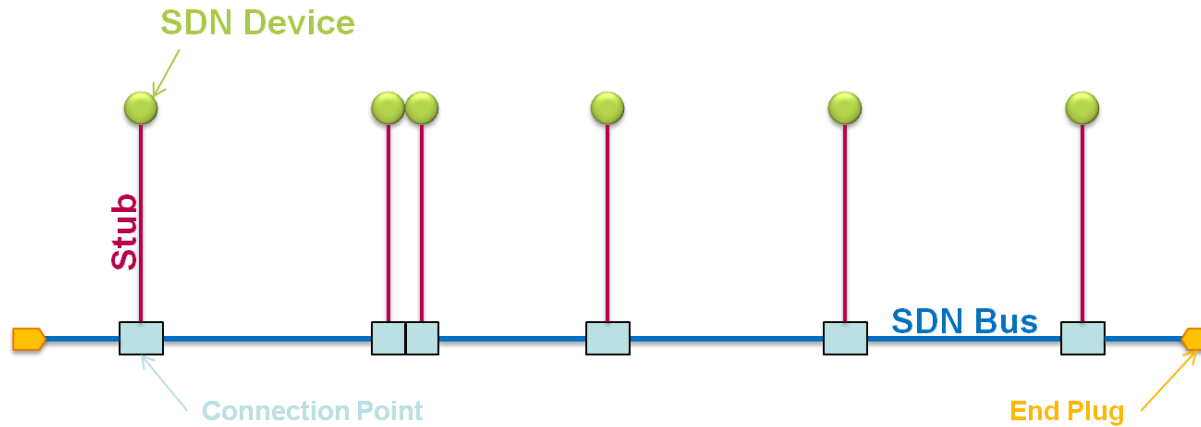
Accepted for stub cable only

■ Recommended cables are:

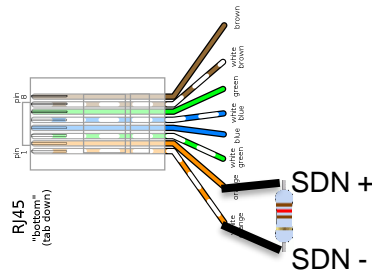
- CAT-5e
- CAT-6

- The Somfy Digital Network topology is a Bus topology. Even if in some case other topologies may work, Somfy doesn't warranty them.





- **Stubs** : The maximum length of a stub is **10 meters (≈ 33 feet)**.
- **SDN Bus** : The maximum length of the Bus is **1000 meters* (3280 feet)**.
 - * Please refer to the controller's datasheet.
- **SDN Devices** : A maximum of **200 devices/nodes** can be connected to the same SDN Bus.
- **End Plug** : The two ends of the SDN Bus must be terminated by a 120Ω termination resistor between lines SDN + and SDN -.



or

