

Partner: Symetrix
Model: Edge/Radius
Device Type: Digital Signal Processor



GENERAL INFORMATION

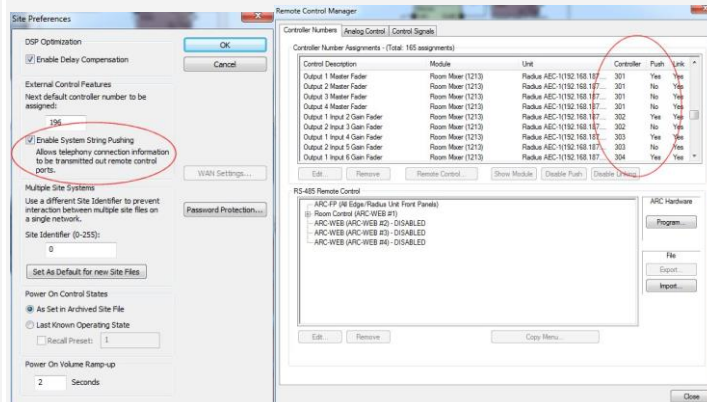
SIMPLWINDOWS NAME:	Symetrix VOIP Single Line Dialer v3.0
CATEGORY:	Mixer
VERSION:	3.0
SUMMARY:	This module controls a single VOIP line for dialing on Symetrix Edge and Radius.

This module controls a single VOIP line for dialing in the Symetrix Edge and Radius. This Symetrix VOIP Single Line Dialer v3.0 module is used to control a single VOIP line for dialing in the Symetrix Edge or Radius. The VOIP card supports 2 lines for dialing. Each line has 2 call appearances that can each support 1 call. In order to control both lines, one module must be used for each line. This module's parameters need to be setup correctly in order to control and provide status for the line that you wish to control.

Important: Feedback status will only be accurate if the control objects are set to push changes in status. The parameter notes contain specific details as to which control functions need to be set to push.

In addition, when using a dialer module System Strings should be set to push in the Symetrix Composer software. This function is a checkbox that can be found under Tools/Site Preferences in the Composer software. The checkbox should be checked to push system strings.

GENERAL NOTES:



CRESTRON HARDWARE REQUIRED:	N/A
SETUP OF CRESTRON HARDWARE:	This module requires the Symetrix Command Processor IP v3.0 or the Symetrix Command Processor Serial v3.0 modules in order to operate. Please read the help files associated with these modules for Crestron Hardware Setup.
VENDOR FIRMWARE:	2.868

Partner: Symetrix
Model: Edge/Radius
Device Type: Digital Signal Processor

**PARAMETERS:**

Controller_Number	<p>The controller numbers of the functions listed. These should be entered as 5 digits with leading zeroes as necessary. For example, if the controller number is 150, it should be entered as 00150.</p> <p>All controller numbers listed should be entered in the module. Please Note: All of the controller numbers used in this module should be sequential as the control processor module will calculate the lowest and highest control numbers being used and send any feedback messages within that range of values to the module for further processing.</p> <p>The control numbers for the following functions should be set to push:</p> <ul style="list-style-type: none">• DND (Do Not Disturb)• Appearance 1 & 2 Call/End LED• Appearance 1 & 2 Hold LED• Appearance 1 & 2 Dialing LED• Appearance 1 & 2 Ringing LED• Appearance 1 & 2 Busy LED <p>System strings should also be set to push as shown in the General Notes section.</p>
Unit_Number	<p>This is the unit enumerator after the dash shown in the Symnet Composer software. For example, "Edge-1" means Unit_Number=1. The value should be entered as a number only – i.e. 1.</p>
Card_Slot	<p>This is the card slot where the card to be controlled is located. Valid selections are slot A through slot D. Slot D is the default setting.</p>
Line_Number	<p>This is the line number of the line to be controlled. Valid selections are line 1 and line 2. Line 1 is the default setting.</p>

Partner: Symetrix
Model: Edge/Radius
Device Type: Digital Signal Processor


CONTROL:

Keypad_0 through Keypad_9, Keypad_Star, Keypad Pound	D	Dial keypad functions used to generate a dial string.
Clear	D	Clears the dial string.
Delete	D	Deletes the last character of the dial string.
Redial	D	Redials the last number dialed.
From_VOIP_Dial_Character_Entry_Module	S	If it is required to provide a keyboard for dialing, the output of the VOIP character dial entry module can be connected to this input to allow for character entry of all supported characters.
External_Dial_String_<40_Characters	S	Serial input that can be used to populate the dial string field from an external source such as a corporate directory.
Do_Not_Disturb_On, Off, Toggle	D	Commands to control the do not disturb function of the line. The toggle function will only operate correctly if the Edge/Radius based control number for the do not disturb function is set to push.
AppearanceX_Call/End	D	This function will directly trigger the corresponding button on the Symetrix device for the indicated appearance on the line.
AppearanceX_Call	D	This function will directly trigger the Call/End button on the Symetrix device for the indicated appearance on the line if the Call/End LED for that appearance is not on or the Hold LED for that appearance is on.
AppearanceX_End	D	This function will directly trigger the Call/End button on the Symetrix device for the indicated appearance on the line if the Call/End LED for that appearance is on and the Hold LED for that appearance is not on. If the Hold LED is on, the Call/End button will be triggered twice – once to take the call off hold and a second time to end the call.
AppearanceX_Hold	D	This function will directly trigger the corresponding button on the Symetrix device for the indicated appearance on the line.
AppearanceX_Reject	D	This function will directly trigger the corresponding button on the Symetrix device for the indicated appearance on the line.
AppearanceX_Transfer	D	This function will directly trigger the corresponding button on the Symetrix device for the indicated appearance on the line.
Disconnect	D	This function will directly trigger the corresponding button on the Symetrix device.
Join	D	This function will directly trigger the corresponding button on the Symetrix device.
Split	D	This function will directly trigger the corresponding button on the Symetrix

Partner: Symetrix
Model: Edge/Radius
Device Type: Digital Signal Processor



		device.
Dial_Speed_DialX	D	Dial the indicated speed dial preset stored in the Symetrix unit.
From_Command_Processor	S	Serial data signal to be routed from one of the To_Module_* outputs on the Symetrix Command Processor IP v3.0 or the Symetrix Command Processor Serial v3.0 modules.

FEEDBACK:

Dialed_Display	S	Serial dial string to be displayed to a touch panel text field. This information will come directly from the Symetrix device and shows the number that has been dialed.
Do_Not_Disturb_is_On	D	Status of the do not disturb function based on real feedback from the device.
AppearanceX_Call/End_LED_is_On AppearanceX_Hold_LED_is_On AppearanceX_Dialing_LED_is_On AppearanceX_Ringing_LED_is_On AppearanceX_Busy_LED_is_On	D	Status of the indicated LED based on real feedback from the device for the indicated appearance.
AppearanceX_Caller_ID	S	Serial signal of caller ID information as provided by real feedback from the device for the indicated appearance.
AppearanceX_Call_Status	S	Serial signal of caller status information as provided by real feedback from the device for the indicated call appearance.
AppearanceX_Elapsed_Time_In_Call	S	Serial signal of elapsed time in call information as provided by real feedback from the device for the indicated appearance.
To_Command_Processor	S	Serial data signal to be sent to the From_Modules input on the Symetrix Command Processor IP v3.0 or the Symetrix Command Processor Serial v3.0 modules.

Partner: Symetrix
Model: Edge/Radius
Device Type: Digital Signal Processor



TESTING:	
OPS USED FOR TESTING:	PRO2: 4.008.0008 CP3: 1.009.0029
SIMPL WINDOWS USED FOR TESTING:	4.02.53
CRES DB USED FOR TESTING:	47.05.002.01
DEVICE DATABASE:	60.02.001.00
SYMBOL LIBRARY USED FOR TESTING:	906
SAMPLE PROGRAM:	Symetrix VOIP IP Demo v3.0 CP3 Symetrix VOIP Serial Demo v3.0 CP3 Symetrix VOIP IP Demo v3.0 Pro2 Symetrix VOIP Serial Demo v3.0 Pro2
REVISION HISTORY:	v3.0 – Initial Release – named as v3.0 to avoid confusion with earlier module versions provided by Symetrix.